



600 SERIES ASSEMBLY INSTRUCTIONS

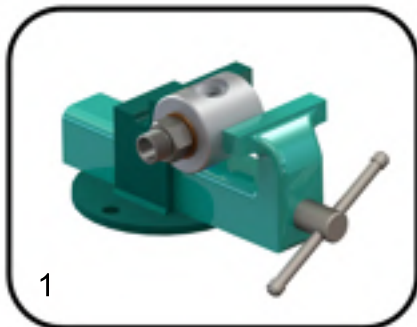


Document No: TL 7 63

Release Date: 01.01.2015

Rev No: 0

SIZE	MODEL
1/8"	601
1/4"	602
3/8"	603
1/2"	605
3/4"	607
1"	610
1 1/4"	612
1 1/2"	615



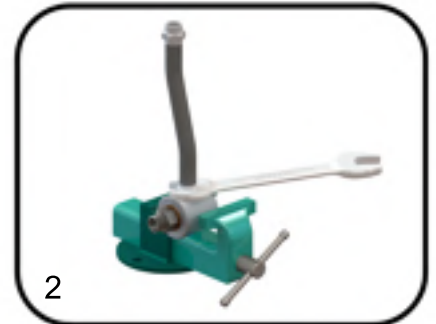
1. First hold the housing of the joint with a bench vise. Do not clamp too tightly, it will damage housing or bearings.

2. Place a new copper gasket to the threads of the supply hose and assemble it to the housing.

3. Clean machine bore surface before assembling.

4. Place a new copper washer onto the shaft thread and assemble it to the machine. When installing, pay attention not to install eccentrically.

5. Connect supply hose to the supply line.



6. There is no anti rotation socket on the housing. For this reason if the housing needs to be stopped from rotating; hold the fitting of the housing inlet hose with an anti rotation rod or bracket.

7. Rigid connection of the anti rotation rod will damage the joint.

8. Assemble hoses without sharp bends or without stress. Rotary joints are designed to float with the hoses.

9. Install hoses with curves in direction of rotation.

10. Flexible hoses must not be twisted during operation. Use proper pipe fittings.

11. For air and hydraulic use rubber or steel flexible hoses.

12. After assembly, check rotating joint for leakage. A small amount of leakage may be seen in the starting period. Never use leaking joint.

13. After assembly; control rotation of joint. If any wobble, vibration, knocking or noise show up or if any eccentricity seems; disassemble the joint from the machine and assemble it again.

