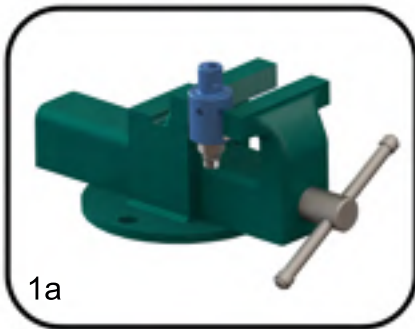
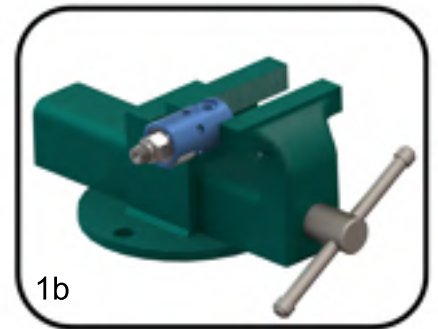


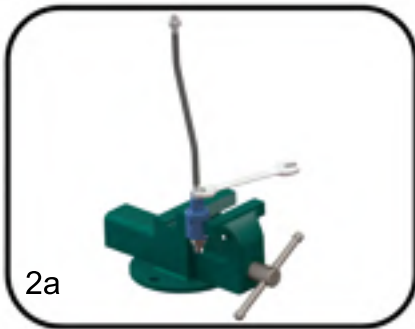
SIZE	MODEL
1/4"	808
3/8"	810



1. First hold the housing of the joint with a bench vise. Do not clamp too tightly, it will damage housing or bearings.

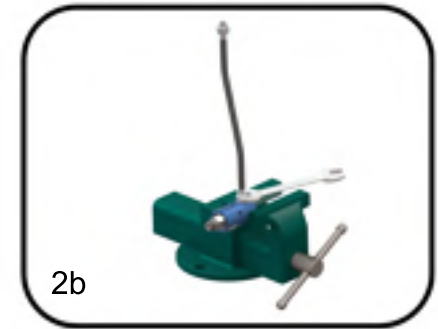


2. Apply sealant or teflon tape to the threads of the nipple of inlet hose and assemble it to the inlet port.

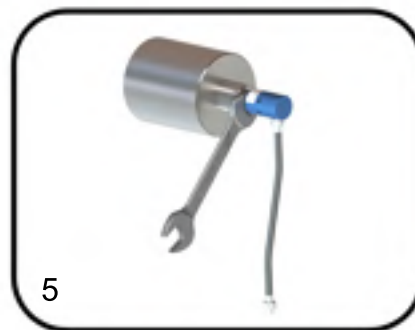


3. Clean machine bore surface before assembling.

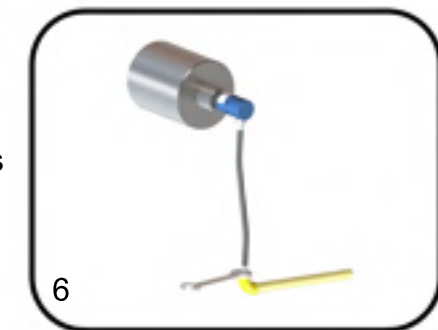
4. Apply grease on the shaft o-ring.



5. Apply sealant or teflon tape to the thread of the shaft and install the joint to the machine. When installing, pay attention not to install eccentrically.



6. Connect inlet hose to the supply line. Use flexible hoses and never install joint directly to the pipes.



7. Assemble hoses without sharp bends or without stress. Rotary joints are designed to float with the hoses.

8. For water and coolant, use rubber or steel flexible hoses.

9. Install hoses with curves in direction of rotation.

10. Flexible hoses must not be twisted during operation. Twisted hoses lose flexibility. Use pipe fittings for proper installation. Use proper pipe fittings.

11. If rotating joint and pipe axis are not on the same axis, hose must be installed with a smooth curve.

12. After assembly; control rotation of joint. If any noise, wobble, vibration, knocking or noise show up or if any eccentricity seems; disassemble the joint from the machine and assemble it again.