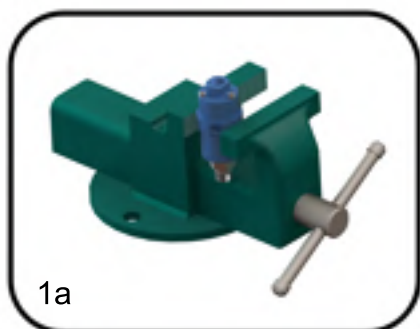


STRAIGHT TYPE

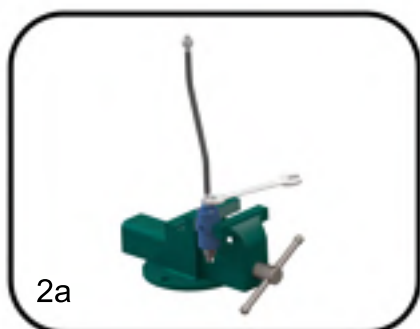
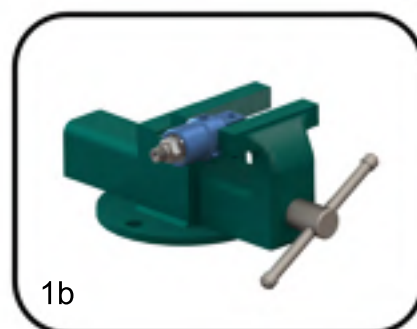
RADIAL TYPE



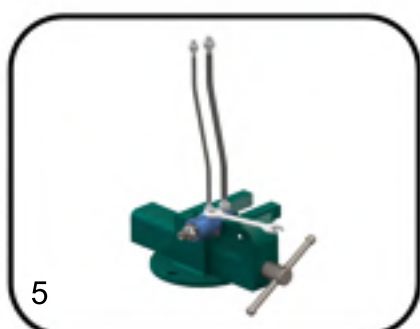
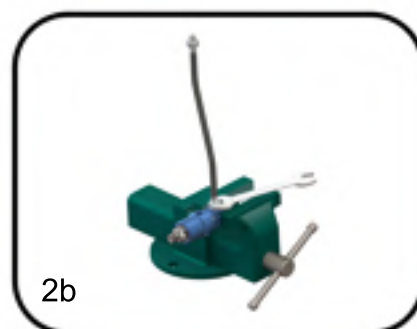
SIZE	MODEL
1/4"	808S
3/8"	810S



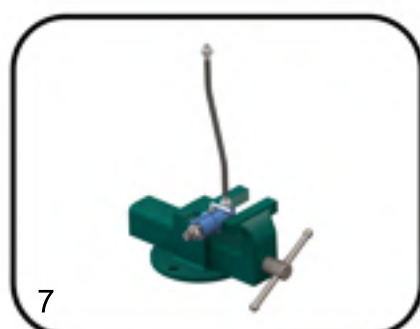
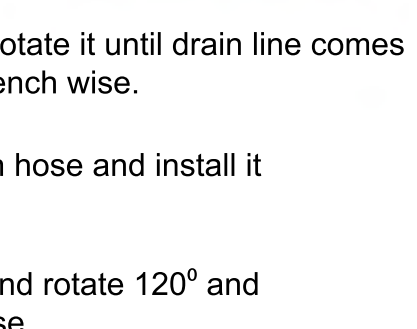
1. First hold the housing of the joint with a bench vise. Do not clamp too tightly, it will damage housing or bearings.



2. Apply sealant or teflon tape to the threads of the inlet hose and assemble it to the housing.



3. There are 3 drain ports on the housing. For this reason; drain hose must be assembled to one drain port and other 2 drain ports must be plugged.



4. Loosen housing from the bench vise, rotate it until drain line comes up and hold the housing again with the bench vise.

5. Apply sealant or teflon tape to the drain hose and install it to the drain port.

6. Loosen housing from the bench vise and rotate 120° and hold the housing again with the bench vise.

7. Apply sealant or teflon tape to the threads of the pipe plug and assemble it to the second drain port.

8. Apply step 6 and 7 for the last drain port.

9. Clean machine bore surface before assembling.

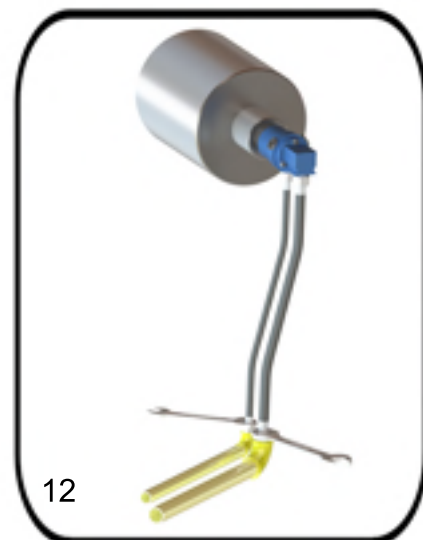
10. Apply grease on the shaft o-ring.



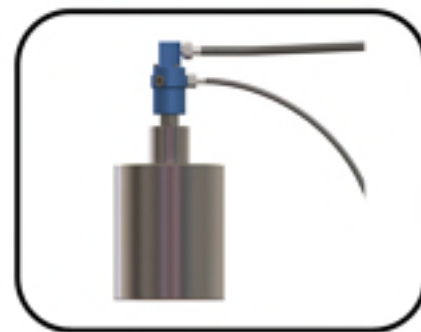
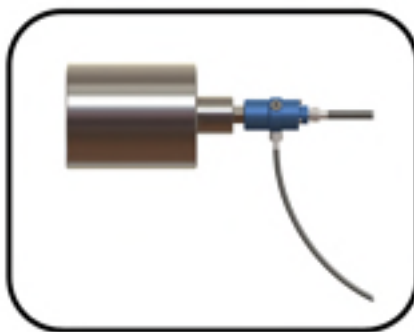
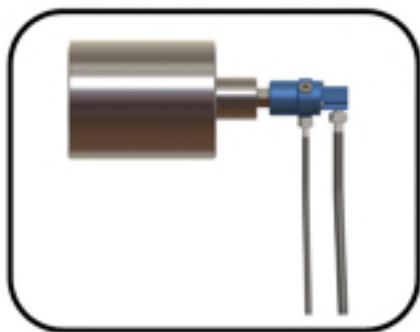
11. Apply sealant or teflon tape to the thread of the shaft and install the joint to the machine. When installing, pay attention not to install eccentricly.

12. Connect inlet hose to the supply line. Use flexible hoses and never install joint directly to the pipes.

13. Connect drain hose to the drain line. Pay attention that the drain line always be continuous downwards.



DRAIN LINE SLOPE ALWAYS CONTINUOUSLY DOWNWARDS



14. Assemble hoses without sharp bends or without stress. Rotary joints are designed to float with the hoses.

15. For air and hydraulic use rubber or steel flexible hoses.

16. Install hoses with curves in direction of rotation.

17. Flexible hoses must not be twisted during operation. Twisted hoses lose flexibility. Use pipe fittings for proper installation. Use proper pipe fittings.

18. If rotating joint and pipe axis are not on the same axis, hose must be installed with a smooth curve.

19. After assembly; control rotation of joint. If any noise, wobble, vibration, knocking or noise show up or if any eccentricity seems; disassemble the joint from the machine and assemble it again.