



1000 SERIES INSTALLATION, OPERATION, MAINTENANCE INSTRUCTIONS



Document No: TL 7 15 EN

Release Date: 17.06.2013

Rev No: 0

1000 SERIES

SIZE: 1/2" (DN50) - 24" (DN600)

ASSEMBLY INSTRUCTIONS:

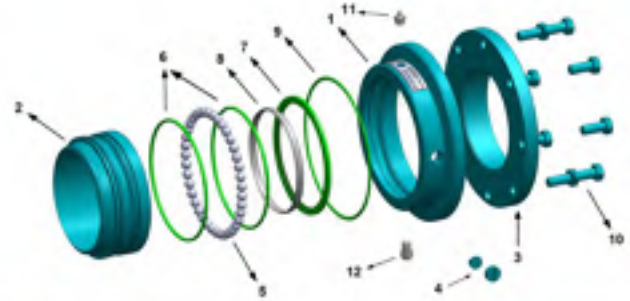
- 1.1000 Series swivel joints are designed for articulated motion only. Do not use for continuous rotation.
- 2.1000 Series swivel joints are assembled with different configuration of seals for different applications. For optimum seal performance according to your application, please consult factory.
- 3.1000 Series swivel joints are designed for max. temperature (-50°C) - (250°C) / (-58°F) - (437°F).
- 4.1000 Series swivel joints; steel models can be used upto 100 bar(1450psi) and stainless steel models can be used upto 40 bar (580psi).

ASSEMBLY

- 1.Becareful not to apply force on the housing when assembling swivel joint to the system.
- 2.Before assembling the joint to the piping system, check pipe eccentricity. Pipe eccentricity may cause deformation on the weld sections and ball bearing races.
- 3.After assembly check if the swivel joint rotates smoothly without eccentricity.

MAINTENANCE

- 1.Unless otherwise stated, all 1000 Series swivel joints must be lubricated periodically. High temperature greases are suggested when high temperature medium will be used. Always check lubrication of the ball bearings before assembly.
- 2.1000 Series swivel joints do not need to be disassembled from the system for seal change.
- 3.For maintenance of 1000 Series on the system, refer to maintenance instructions.



1000 SERIES SPARE PARTS LIST

1	1000 SERIES HOUSING	1
2	1000 SERIES SHAFT	1
3	1000 SERIES HOUSING FLANGE	1
4	BALL BEARING PLUG	1 SET
5*	BALL BEARING	X
6*	O-RING	2
7*	SEAL RING	1
8*	INTERNAL SCRAPER	1
9*	DRAIN O-RING	1
10	BOLTS	X
11	GREASE RING	1
12	GREASE RELIEF VALVE	1

* Spare parts set