



200 SERIES INSTALLATION, OPERATION AND MAINTENANCE INSTRUCTIONS



Document No: TL 7 46 EN

Release Date: 01.01.2015

Rev No: 0

SIZE	MODEL
1/2"	205
3/4"	207
1"	210
1 1/4"	212
1 1/2"	215
2"	220



WARNING

Unless specified; ROTOFLUID rotary joints must not be used with Hydrocarbons or Flammable Mediums. Leaking may result explosion or fire.

Medium: Steam, Hot Oil, Water

Max. Pressure: 17 bar (250 psi)

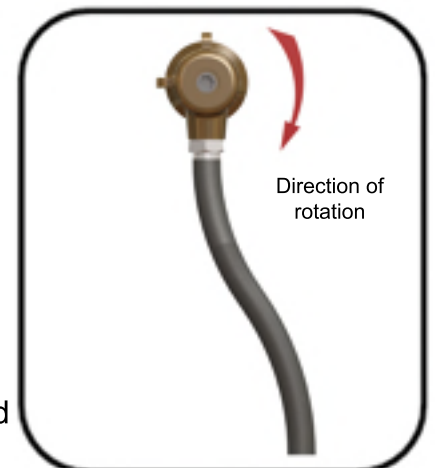
Max. Temperature: 200°C (392°F) (200 Series)
315°C (600°F) (200H Series)

Max. Speed: 400 RPM

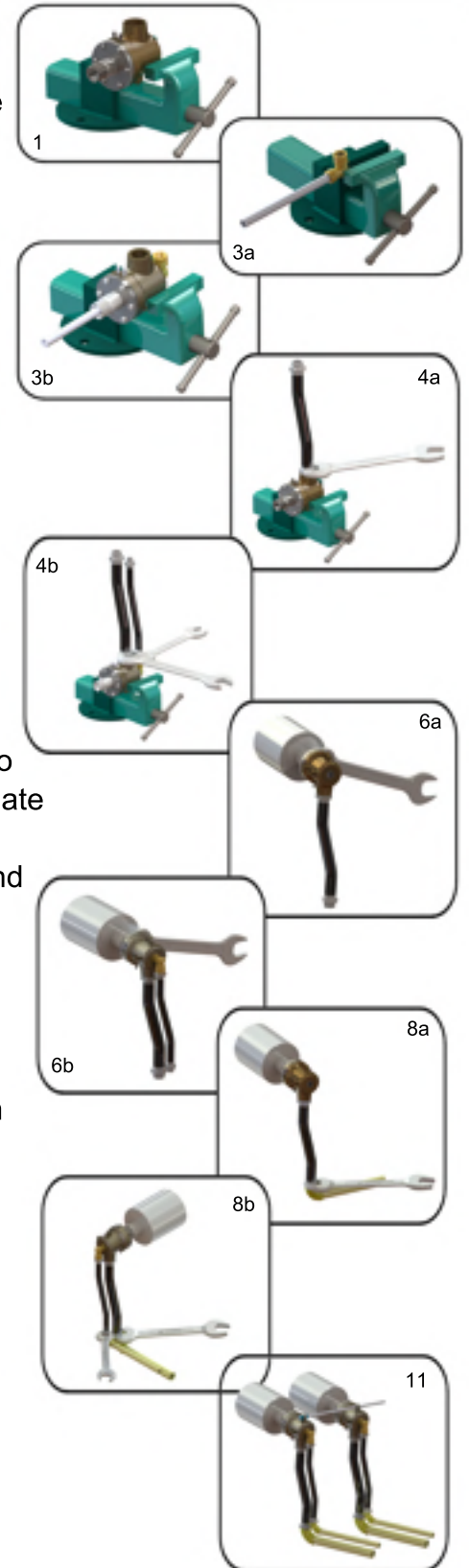
- Do not work with max. pressure at max. speed.
- All ROTOFLUID products are leakage tested before shipment. Disassembling or dismantling the joint invalidates the warranty.
- Operator should not make any modification or attachments and retrofitting of the rotary joint without manufacturers' consent is prohibited.
- It is important to use correct hand of rotary connection thread to ensure the Rotary Joint will not unscrew. If shaft rotates forward & reverse; flanged connection is recommended.
- ROTOFLUID Rotary Joints may only be installed by personel who have experience and knowledge about rotary joints and plumbing systems.
- For safe operation only use genuine ROTOFLUID parts.
- For safe operation only use hoses which are appropriate for the media.
- Follow engineering specifications of the machine builder.
- 200 Series Rotary Joints are designed to work with the interpassing medium. Do not run dry very long time. If application needs dry running, please consult factory.
- 200 Series shafts have a seal wear indicator which show up when the seal ring is worn %75.

INSTALLATION

- Do not connect Rotary Joint directly to piping. Rotary Joints are designed to float with the flexible hoses.
- Install hose with curve in direction of rotation.
- Unless specified, all 200 Series Rotary Joints are shipped as P-type.
- All 200 Series Rotary Joints has a standard P type housing. S type and RSP type joints consists of P-type housings with the appropriate elbow (S or RSP) type.
- Always flood the Rotary Joint and purge any entrapped air in the system before operating the machine to improve joint performance and longer joint life.
- 200 Series Rotary Joints are equipped with carbon seals. Because of the seal wear, shaft is pushed out of the housing by the spring force and the length of the joint will increase which must be allowed by the design of the machine or system.



1. First hold the housing of the joint with a bench vise. Do not clamp too tightly, it will damage housing or bearings.
2. If the joint is used for single flow, apply sealant or teflon tape to the threads of the pipe plug and fix it to the second port of the joint.
3. If the joint is used for dual flow,
 - 3.a) apply sealant or teflon tape to the threads of the siphon pipe and fix it to the dual flow elbow.
 - 3.b) Apply sealant or teflon tape to the threads of the dual flow elbow. Be careful when assembling dual flow elbow with siphon pipe to the second port of the joint, internal siphon pipe may damage internal parts of the joint.
4. Apply sealant or teflon tape to the threads of the inlet and outlet hoses and assemble them to the housing.
5. Clean machine bore surface before assembling.
6. Apply sealant or teflon tape to the threads of the shaft and install the joint to the machine. When installing, pay attention not to install eccentrically.
7. If the joint shaft is quick release; put a new copper washer into the bore of the roll, assemble qr flange onto the shaft, place split rings onto the socket around the shaft correspondingly, place qr flange onto the split wedges and fix the flange to the bore of the roll with appropriate bolts.
8. Connect hoses to the supply and return lines. Use flexible hoses and never install joint directly to the pipes.
9. After assembly; control rotation of joint. If any noise, wobble, vibration, knocking or noise show up or if any eccentricity seems; disassemble the joint from the machine and assemble it again.
10. All 200 Series housings have 2 anti rotation lugs and 1 set of anti rotation pins on the housing which are used to stop the housing from rotation.
11. Install the anti rotation rod into one of the holes on the lugs on the housing. Never tie more than 2 joints with a single rod. Fix the rod to one of the holes of the joints and leave the rod to float.



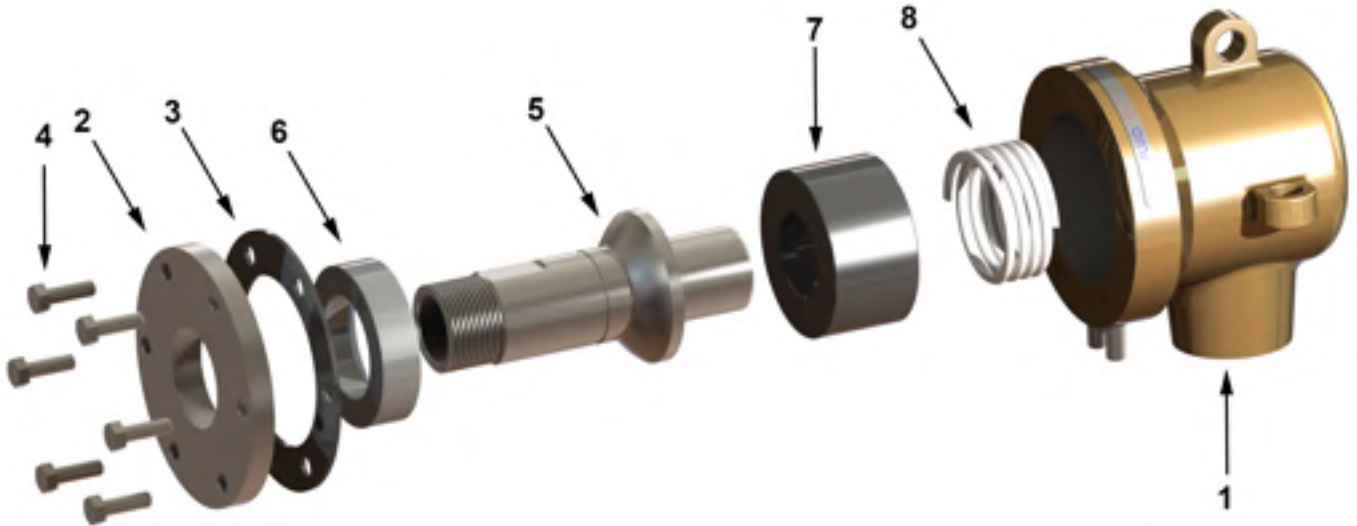
LUBRICATION

- 200 Series Rotary Joints are equipped with carbon bearing and carbon seal ring. 200 Series are lubricated with interpassing fluid. For this reason do not need lubrication.

MAINTENANCE

- 200 Series Rotary Joints are maintenance free.
- Before maintenance, allow the machine and system to cool down.
- Be sure that no feed pressure is applied.
- If the rotary joint is defected and leaking occurs, replace seals with new ones and do not work with leaking joints.

200 SERIES SPARE PARTS



NO	PART NAME	QTY	
1	HOUSING	1	
2	HOUSING FLANGE	1	
3	HOUSING FLANGE GASKET	1	
4	BOLTS	6	(1/2"-1 1/4")
		8	(1 1/2")
		10	(2")
5	SHAFT	1	
6	SEAL RING	1	
7	GRAPHITE BEARING	1	
8	SPRING	1	

Repair kits are available for 200 Series and can be supplied by ROTOFLUID.

If you don't want to repair your rotary joints, ROTOFLUID will disassemble the joints, clean and replace worn out parts and all sealing test will be made and joints will be shipped as good as a new joint.