



800 SERIES INSTALLATION, OPERATION AND MAINTENANCE INSTRUCTIONS



Document No: TL 7 70 EN

Release Date: 01.01.2015

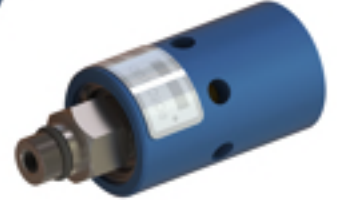
Rev No: 0

SIZE	MODEL
1/4"	808
3/8"	810



AXIAL TYPE

RADIAL TYPE



WARNING

Unless specified; ROTOFLUID rotary joints must not be used with Hydrocarbons or Flammable Mediums. Leaking may result explosion or fire.

Medium: Water, Coolant, Cutting Fluid

Max. Pressure: 70 bar (1,050 psi)

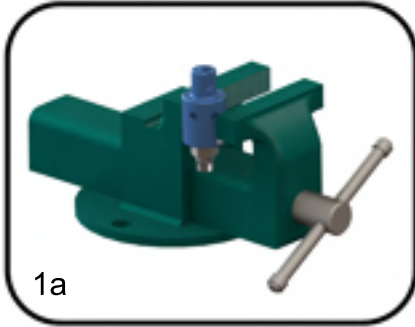
Max. Temperature: 120°C (250°F)

Max. Speed: 10,000 RPM

- Do not work with max. pressure at max. speed.
- All ROTOFLUID products are leakage tested before shipment. Disassembling or dismantling the joint invalidates the warranty.
- Operator should not make any modification or attachments and retrofitting of the rotary joint without manufacturers' consent is prohibited.
- It is important to use correct hand of rotary connection thread to ensure the Rotary Joint will not unscrew. If shaft rotates forward & reverse; flanged connection is recommended.
- ROTOFLUID Rotary Joints may only be installed by personel who have experience and knowledge about rotary joints and plumbing systems.
- For safe operation only use genuine ROTOFLUID parts.
- For safe operation only use hoses which are appropriate for the media.
- Follow engineering specifications of the machine builder.
- 800 Series Rotary Joints are designed to work with the interpassing medium. Do not run dry very long time. If application needs dry running, please consult factory.

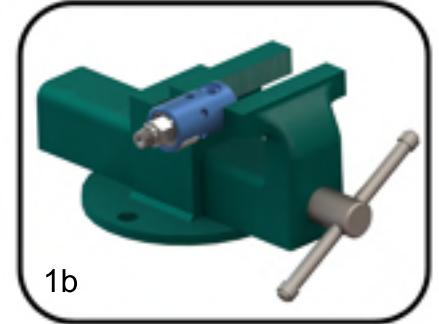
INSTALLATION

- Do not connect Rotary Joint directly to piping. Rotary Joints are designed to float with the flexible hoses.
- Install hose with curve in direction of rotation.
- All 800 Rotary Joints are shipped as P-type.
- Always flood the Rotary Joint and purge any entrapped air in the system before operating the machine to improve joint performance and longer joint life.
- For water and coolant, use rubber or steel flexible hoses.
- Flexible hoses must not be twisted during operation. Twisted hoses lose flexibility. Use pipe fittings for proper installation. Use proper pipe fittings.
- If rotating joint and pipe axis are not on the same axis, hose must be installed with a smooth curve.

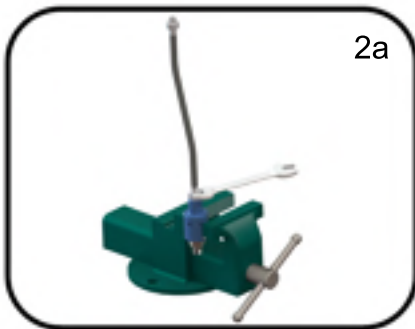


1. First hold the housing of the joint with a bench vise. Do not clamp too tightly, it will damage housing or bearings.

2. Apply sealant or teflon tape to the threads of the nipple of inlet hose and assemble it to the inlet port.

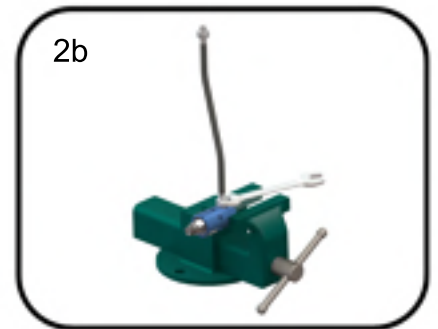


3. Clean machine bore surface before assembling.

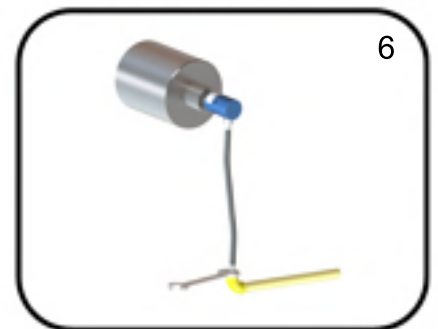


4. Apply grease on the shaft o-ring.

5. Apply sealant or teflon tape to the thread of the shaft and install the joint to the machine. When installing, pay attention not to install eccentrically.



6. Connect inlet hose to the supply line. Use flexible hoses and never install joint directly to the pipes.



7. Assemble hoses without sharp bends or without stress. Rotary joints are designed to float with the hoses.

LUBRICATION

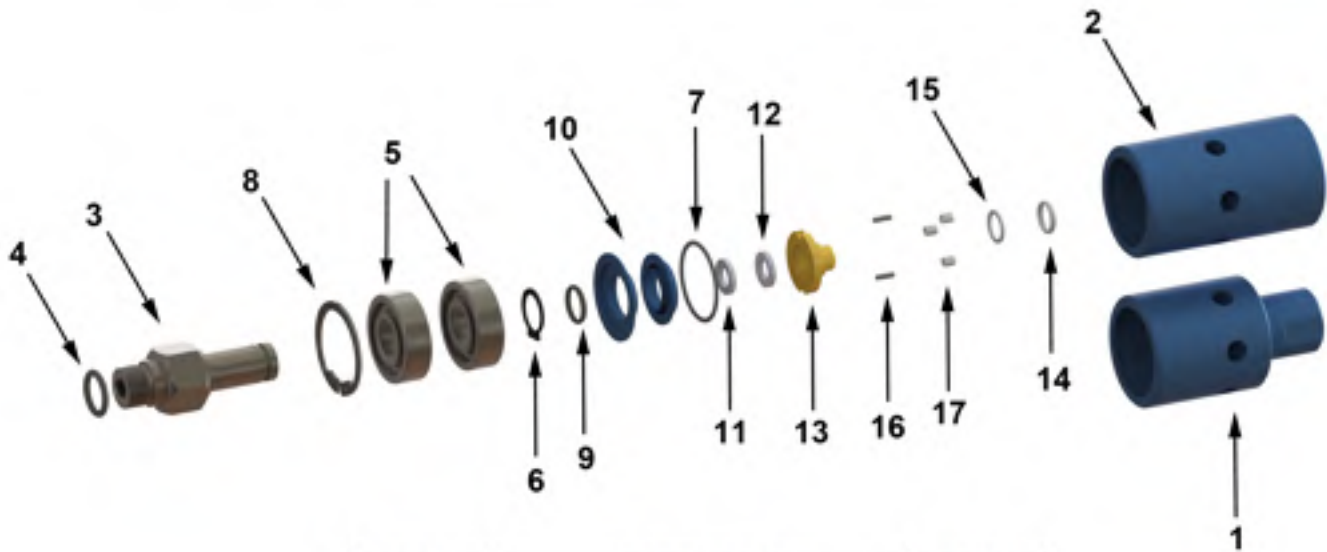
- 800 Series Rotary Joints are life lubricated and do not need lubrication during operation.

MAINTENANCE

- 800 Series Rotary Joints are maintenance free.

- Before maintenance, be sure that no feed pressure is applied.

- If the rotary joint is defected and leaking occurs, replace seals with new ones and do not work with leaking joints.



NO	PART NAME	QTY
1	AXIAL HOUSING	1
2	RADIAL HOUSING	1
3	SHAFT	1
4	SHAFT FRONT O-RING	1
5	BALL BEARING	2
6	EXT. RETAINING RING	1
7	HOUSING O-RING	1
8	INT. RETAINING RING	1
9	SLINGER O-RING	1
10	SLINGER SET	1
11	SEAL RING	1
12	FLOATING SEAL RING	1
13	FLOATING SEAL HOLDER	1
14	O-RING	1
15	BACK-UP	1
16	PIM	2
17	SPRING	3

SPARE PARTS KIT

- (4) Shaft Front O-ring
- (7) Housing O-ring
- (9) Slinger O-ring
- (11) Seal Ring
- (12) Floating Seal Ring
- (13) Floating Seal Holder
- (14) O-ring
- (15) Back-up
- (17) Spring

Repair kits are available for 800 Series and can be supplied by ROTOFLUID.

If you don't want to repair your rotary joints, ROTOFLUID will disassemble the joints, clean and replace worn out parts and all sealing test will be made and joints will be shipped as good as a new joint.