



8000 SERIES INSTALLATION, OPERATION, MAINTENANCE INSTRUCTIONS



Document No: TL 7 28 EN

Release Date: 03.07.2013

Rev No: 0

8000 SERIES

SIZE: 2" (DN50) - 12" (DN300)

ASSEMBLY INSTRUCTIONS:

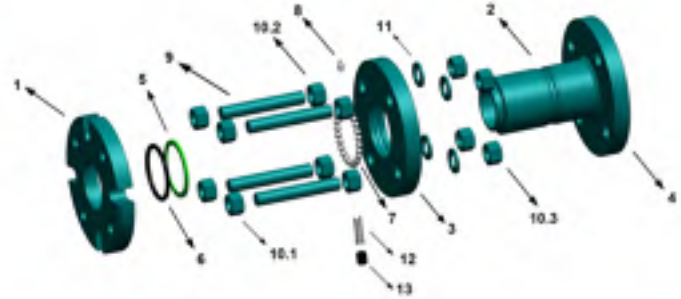
- 1.8000 Series swivel joints are designed for articulated motion only. Do not use for continuous rotation.
- 2.8000 Series swivel joints are assembled with different configuration of seals for different applications. For optimum seal performance according to your application, please consult factory.
- 3.8000 Series swivel joints are designed for maks. temperature 200°C (392°F) and maks.20 bar (290 psi).

ASSEMBLY

- 1.Becareful not to apply force on the housing when assembling swivel joint to the system.
- 2.8000 Series can be assembled to the supply and return pipes directly with the help of corresponding flanges. While assembling, pay attention not to tighten nuts eccentrically.
- 3.Before assembling the joint to the piping system, check pipe eccentricity. Pipe eccentricity may cause deformation on the weld sections and ball bearing races.
- 4.After assembly check if the swivel joint rotates smoothly without eccentricity.

MAINTENANCE

- 1.Unless otherwise stated, all 8000 Series swivel joints must be lubricated periodically. High temperature greases are suggested when high temperature medium will be used. Always check lubrication of the ball bearings before assembly.
- 2.8000 Series swivel joints do not need to be disassembled from the system for seal change.
- 3.For maintenance of 8000 Series on the system, refer to maintenance instructions.



1000 SERIES SPARE PARTS LIST

1	FRONT FLANGE	1
2	SHAFT	1
3	CENTRE FLANGE	1
4	BOTTOM FLANGE	1
5*	BACK-UP	1
6*	O-RING	1
7*	BALL BEARING	x
8	GREASE RING	1
9	STUD BOLT	x
10	NUT	x
11	SPACER	x
12	BALL PLUG	1
13	CAP SCREW	1

* Spare parts set