



# 900S SERIES INSTALLATION, OPERATION AND MAINTENANCE INSTRUCTIONS



Document No: TL 7 79 EN

Release Date: 01.01.2015

Rev No: 0

SIZE	MODEL
1/2"	905S
3/4"	907S
1"	910S
1 1/4"	912S
1 1/2"	915S
2"	920S
2 1/2"	925S
3"	930S
4"	940S
5"	950S

STYLE 20



STYLE 50



STYLE 30/40



STYLE 60



## WARNING

Unless specified; ROTOFLUID rotary joints must not be used with Hydrocarbons or Flammable Mediums. Leaking may result explosion or fire.

**Medium:** Steam, Hot Oil, Water

**Max. Steam Pressure:** 17 bar (250 psi)

**Max. Hot Oil Pressure:** 10 bar (150 psi)

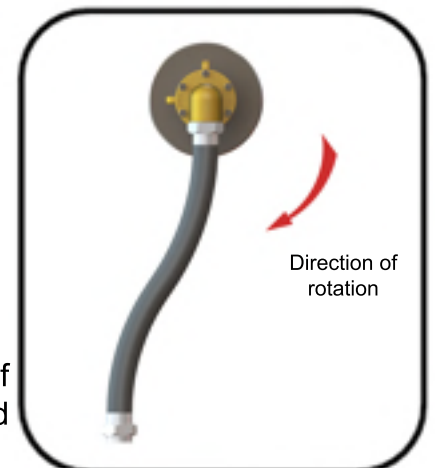
**Max. Temperature:** 200°C (392°F) (900S Series)  
315°C (600°F) (900S-H Series)

**Max. Speed:** 600 RPM

- Do not work with max. pressure at max. speed.
- All ROTOFLUID products are leakage tested before shipment. Disassembling or dismantling the joint invalidates the warranty.
- Operator should not make any modification or attachments and retrofitting of the rotary joint without manufacturers' consent is prohibited.
- It is important to use correct hand of rotary connection thread to ensure the Rotary Joint will not unscrew. If shaft rotates forward & reverse; flanged connection is recommended.
- ROTOFLUID Rotary Joints may only be installed by personel who have experience and knowledge about rotary joints and plumbing systems.
- For safe operation only use genuine ROTOFLUID parts.
- For safe operation only use hoses which are appropriate for the media.
- Follow engineering specifications of the machine builder.
- 900S Series Rotary Joints are designed to work with the interpassing medium. Do not run dry very long time. If application needs dry running, please consult factory.
- 900S Series shafts have a seal wear indicator which show up when the seal ring is worn %75.

## INSTALLATION

- Do not connect Rotary Joint directly to piping. Rotary Joints are designed to float with the flexible hoses.
- Install hose with curve in direction of rotation.
- 900S Series Rotary Joints are shipped with different end caps according to application styles; single flow, dual flow s type or dual flow rsp type.
- Always flood the Rotary Joint and purge any entrapped air in the system before operating the machine to improve joint performance and longer joint life.
- 900S Series Rotary Joints are equipped with carbon seals. Because of the seal wear, shaft is pushed out of the housing by the spring force and the length of the joint will increase which must be allowed by the design of the machine or system.





# 900S SERIES INSTALLATION, OPERATION AND MAINTENANCE INSTRUCTIONS



Document No: TL 7 79 EN

Release Date: 01.01.2015

Rev No: 0

1. First hold the housing of the joint with a bench vise. Do not clamp too tightly, it will damage housing or bearings.

2. If the joint is single flow, apply sealant or teflon tape to the thread of the inlet hose and assemble it to the end cap.

3. If the joint is used for dual flow,

3.a) For S type joints; apply sealant or teflon tape to the thread of the siphon pipe and place it inside the shaft and fix it to the end cap.

3.b) For Rsp type joints; siphon pipe is on the machine; apply grease around bearing surface of the siphon pipe.

3.c) Apply sealant or teflon tape to the thread of the inlet hose and assemble it to the end cap

3.d) Rotate joint upside down and hold it with the bench vise

3.e) Apply sealant or teflon tape to the thread of the outlet hose and assemble it to the end cap.

4. Clean machine bore surface before assembling.

5a. For S Type Joints; apply sealant or teflon tape to the thread of the shaft and install the joint to the machine.

5b. For RSP Type Joints; For RSP type joints; place the joint around the siphon pipe and install the joint to the machine.

5c. When installing, pay attention not to install eccentrically.

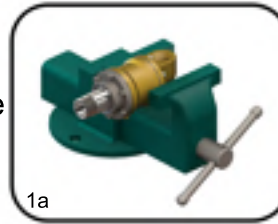
6. If the joint shaft is quick release; put a new copper washer on the bore of the roll, assemble qr flange onto the shaft, place split rings onto the socket around the shaft correspondingly, place qr flange onto the split wedges and fix the flange to the bore of the roll with appropriate bolts.

7. Connect hoses to the supply and return lines. Use flexible hoses and never install joint directly to the pipes.

8. After assembly; control rotation of joint. If any noise, wobble, vibration, knocking or noise show up or if any eccentricity seems; disassemble the joint from the machine and assemble it again.

9. All 900S Series housings have 1 anti rotation lug on the housing which is used to stop the housing from rotation.

10. Install the anti rotation rod into hole on the lug of the housing. Never tie more than 2 joints with a single rod. Fix the rod to one of the holes of the joints and leave the rod to float.



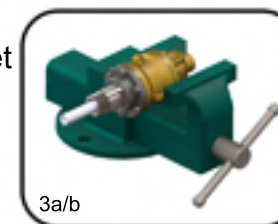
1a



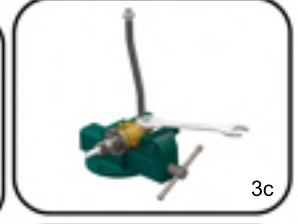
1b



2



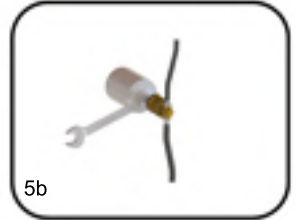
3a/b



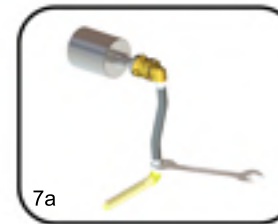
3c



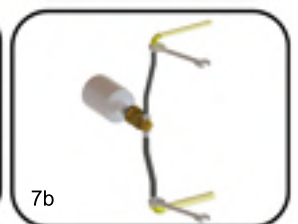
5a



5b



7a



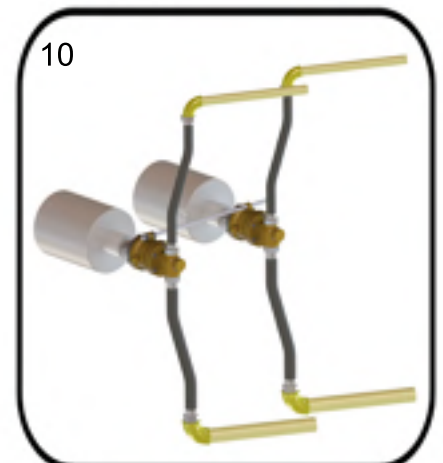
7b

## LUBRICATION

- 900s Series Rotary Joints are equipped with carbon bearing and carbon seal ring. 900S Series are lubricated with interpassing fluid. For this reason do not need lubrication.

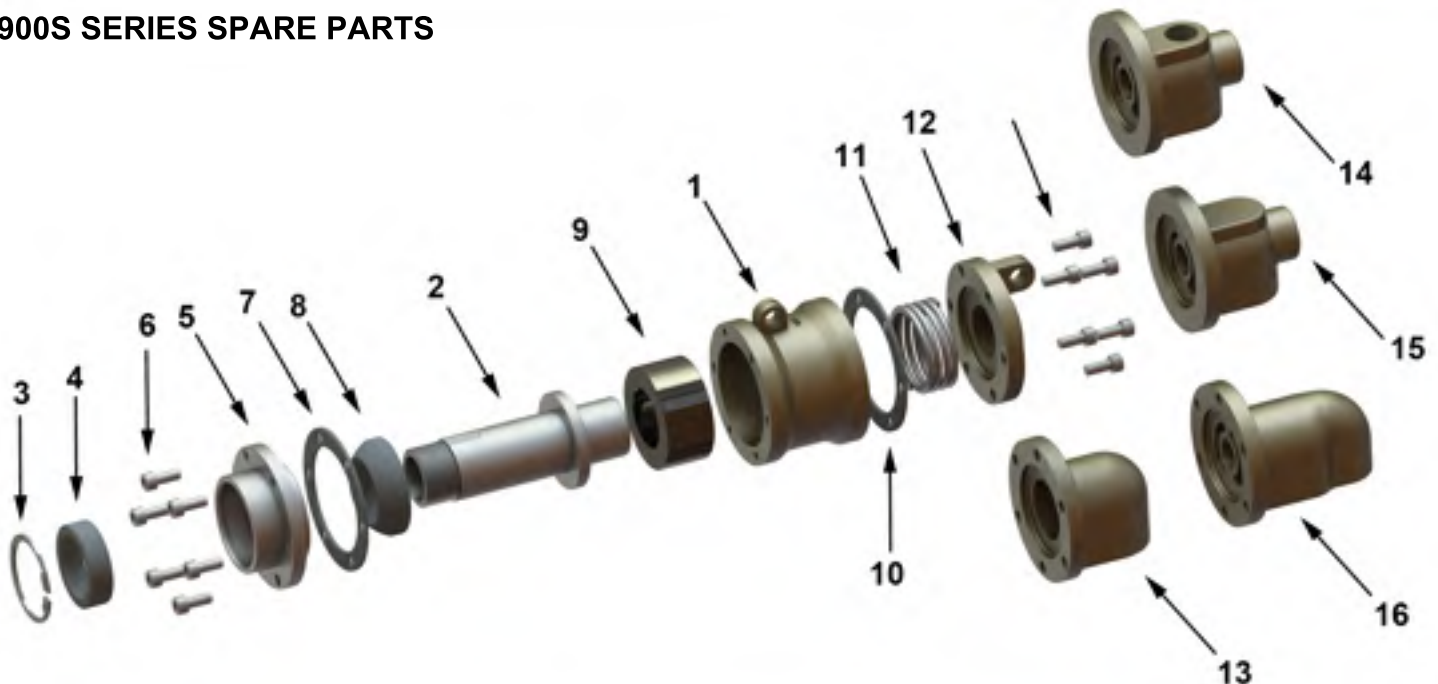
## MAINTENANCE

- 900S Series Rotary Joints are maintenance free.
- Before maintenance, allow the machine and system to cool down.
- Be sure that no feed pressure is applied.
- If the rotary joint is defected and leaking occurs, replace seals with new ones and do not work with leaking joints.



10

## 900S SERIES SPARE PARTS



NO	PART NAME	QTY
1	900S HOUSING	1
2	900S SHAFT	1
3	INT. RETAINING RING	1
4	FRONT GRAPHITE BEARING	1
5	HOUSING FLANGE	1
6	BOLTS	n
7	FLANGE GASKET	1
8	SEAL RING	1
9	GRAPHITE BEARING	1

NO	PART NAME	QTY
10	FLANGE GASKET	1
11	SPRING	1
12	END CAP - STYLE 20	1
13	END CAP - STYLE 30	1
14	END CAP - STYLE 40	1
15	END CAP - STYLE 50	1
16	END CAP - STYLE 60	1
17	BOLT	n

### SPARE PARTS SET

- (4) Front Graphite Bearing
- (7) Flange Gasket
- (8) Seal Ring
- (9) Graphite Bearing
- (10) Flange Gasket
- (11) Spring

Repair kits are available for 900S Series and can be supplied by ROTOFLUID.

If you don't want to repair your rotary joints, ROTOFLUID will disassemble the joints, clean and replace worn out parts and all sealing test will be made and joints will be shipped as good as a new joint.